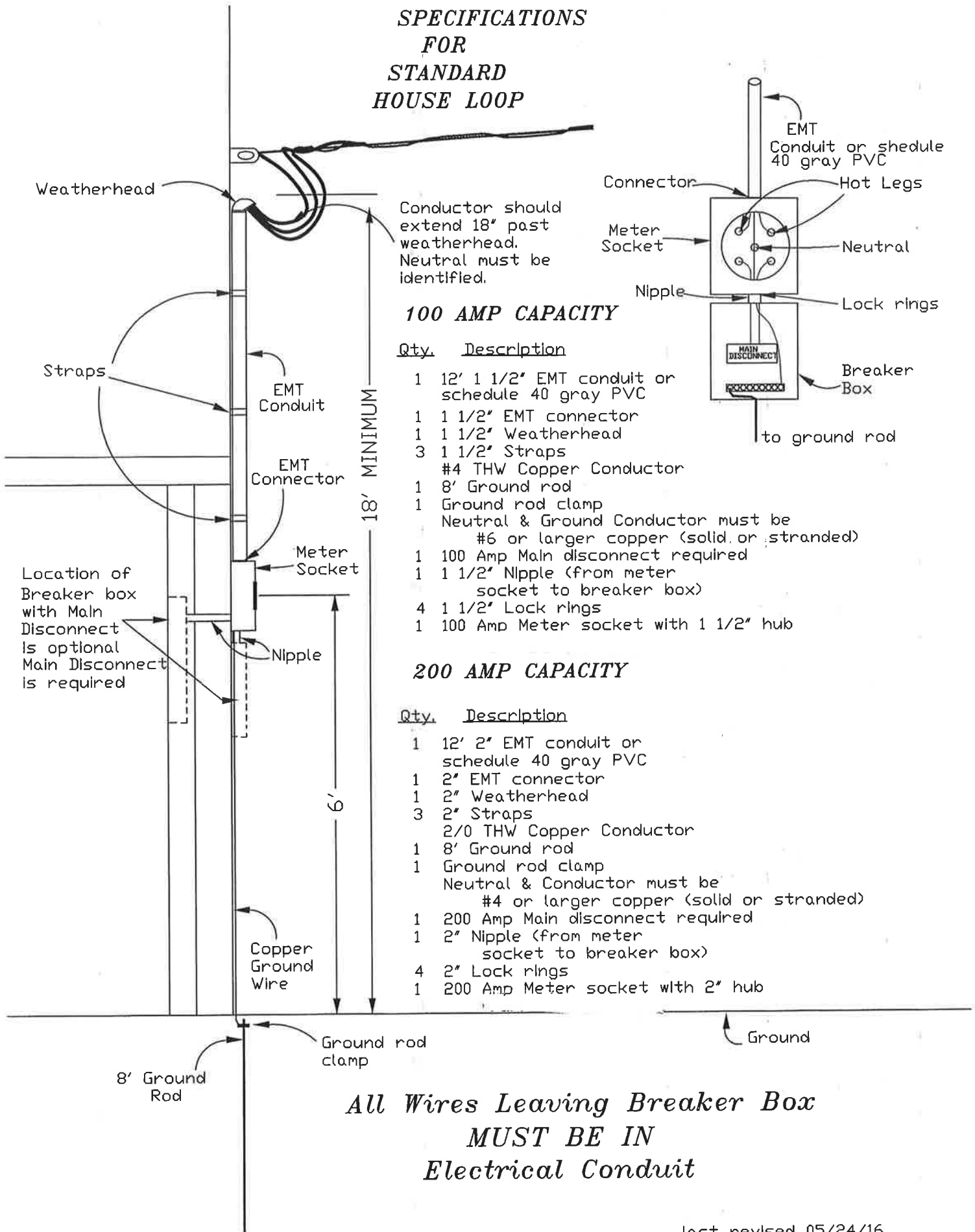


**SPECIFICATIONS  
FOR  
STANDARD  
HOUSE LOOP**



Conductor should extend 18" past weatherhead. Neutral must be identified.

**100 AMP CAPACITY**

| Qty. | Description  |
|------|--|
| 1    | 12' 1 1/2" EMT conduit or schedule 40 gray PVC                             |
| 1    | 1 1/2" EMT connector   |
| 1    | 1 1/2" Weatherhead   |
| 3    | 1 1/2" Straps  |
|      | #4 THW Copper Conductor  |
| 1    | 8' Ground rod  |
| 1    | Ground rod clamp   |
|      | Neutral & Ground Conductor must be #6 or larger copper (solid or stranded) |
| 1    | 100 Amp Main disconnect required   |
| 1    | 1 1/2" Nipple (from meter socket to breaker box)                           |
| 4    | 1 1/2" Lock rings  |
| 1    | 100 Amp Meter socket with 1 1/2" hub                                       |

**200 AMP CAPACITY**

| Qty. | Description   |
|------|---|
| 1    | 12' 2" EMT conduit or schedule 40 gray PVC                          |
| 1    | 2" EMT connector  |
| 1    | 2" Weatherhead  |
| 3    | 2" Straps   |
|      | 2/0 THW Copper Conductor  |
| 1    | 8' Ground rod   |
| 1    | Ground rod clamp  |
|      | Neutral & Conductor must be #4 or larger copper (solid or stranded) |
| 1    | 200 Amp Main disconnect required                                    |
| 1    | 2" Nipple (from meter socket to breaker box)                        |
| 4    | 2" Lock rings   |
| 1    | 200 Amp Meter socket with 2" hub                                    |

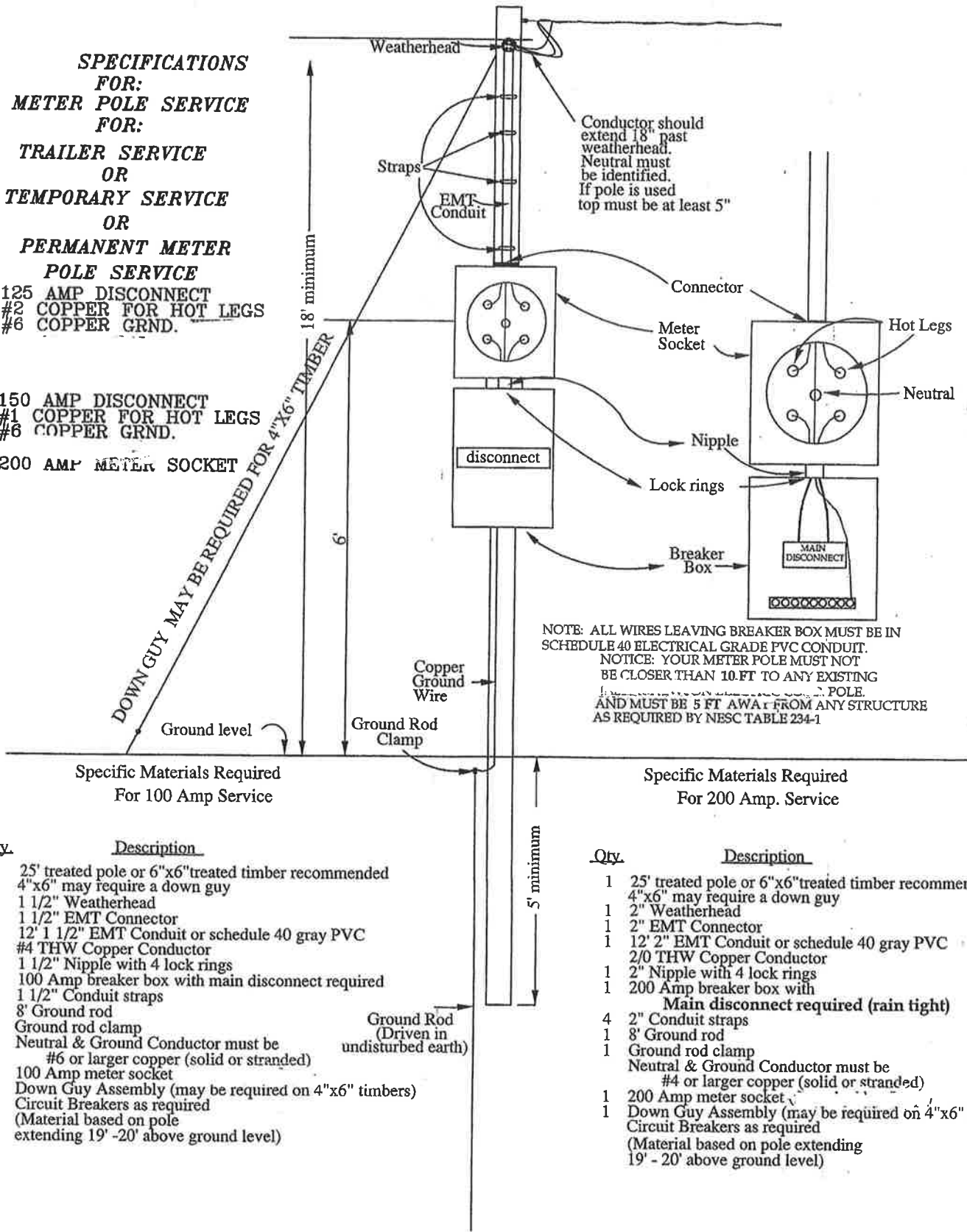
**All Wires Leaving Breaker Box  
MUST BE IN  
Electrical Conduit**

**SPECIFICATIONS  
FOR:  
METER POLE SERVICE  
FOR:  
TRAILER SERVICE  
OR  
TEMPORARY SERVICE  
OR  
PERMANENT METER  
POLE SERVICE**

125 AMP DISCONNECT  
#2 COPPER FOR HOT LEGS  
#6 COPPER GRND.

150 AMP DISCONNECT  
#1 COPPER FOR HOT LEGS  
#6 COPPER GRND.

200 AMP METER SOCKET



NOTE: ALL WIRES LEAVING BREAKER BOX MUST BE IN SCHEDULE 40 ELECTRICAL GRADE PVC CONDUIT. NOTICE: YOUR METER POLE MUST NOT BE CLOSER THAN 10 FT TO ANY EXISTING POLE AND MUST BE 5 FT AWAY FROM ANY STRUCTURE AS REQUIRED BY NESC TABLE 234-1

**Specific Materials Required  
For 100 Amp Service**

| Qty. | Description   |
|------|---|
| 1    | 25' treated pole or 6"x6" treated timber recommended<br>4"x6" may require a down guy        |
| 1    | 1 1/2" Weatherhead  |
| 1    | 1 1/2" EMT Connector  |
| 1    | 12' 1 1/2" EMT Conduit or schedule 40 gray PVC  |
| 1    | #4 THW Copper Conductor   |
| 1    | 1 1/2" Nipple with 4 lock rings   |
| 1    | 100 Amp breaker box with main disconnect required   |
| 4    | 1 1/2" Conduit straps   |
| 1    | 8' Ground rod   |
| 1    | Ground rod clamp  |
|      | Neutral & Ground Conductor must be #6 or larger copper (solid or stranded)                  |
| 1    | 100 Amp meter socket  |
| 1    | Down Guy Assembly (may be required on 4"x6" timbers)  |
|      | Circuit Breakers as required (Material based on pole extending 19' -20' above ground level) |

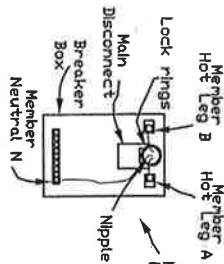
**Specific Materials Required  
For 200 Amp. Service**

| Qty. | Description  |
|------|--|
| 1    | 25' treated pole or 6"x6" treated timber recommended   |
| 1    | 4"x6" may require a down guy   |
| 1    | 2" Weatherhead   |
| 1    | 2" EMT Connector   |
| 1    | 12' 2" EMT Conduit or schedule 40 gray PVC   |
| 1    | 2/0 THW Copper Conductor   |
| 1    | 2" Nipple with 4 lock rings  |
| 1    | 200 Amp breaker box with Main disconnect required (rain tight)                               |
| 4    | 2" Conduit straps  |
| 1    | 8' Ground rod  |
| 1    | Ground rod clamp   |
|      | Neutral & Ground Conductor must be #4 or larger copper (solid or stranded)                   |
| 1    | 200 Amp meter socket   |
| 1    | Down Guy Assembly (may be required on 4"x6" timbers)   |
|      | Circuit Breakers as required (Material based on pole extending 19' - 20' above ground level) |

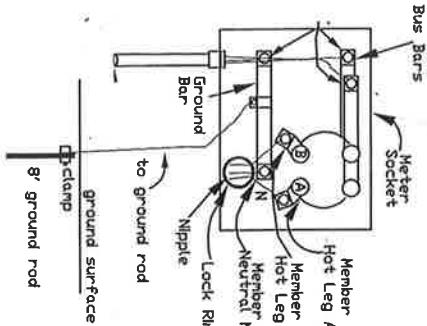
**All Wires Leaving Breaker Box  
MUST BE IN  
Electrical Conduit**

\*\* As required by NESC Table 232-1

# UNDERGROUND SERVICE SPECIFICATIONS



Neutral must be identified.



## 100 AMP CAPACITY

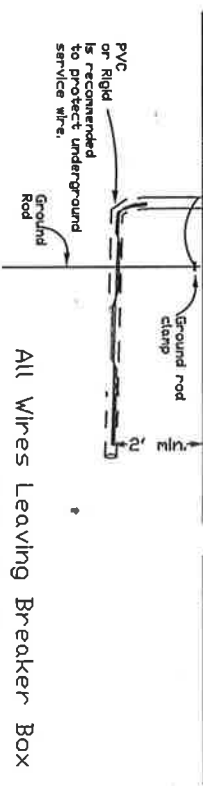
### Qty. Description

- 1 #4 THW Copper Conductor to disconnect box
- 1 5/8" x 8" copper coated or galvanized ground rod
- 1 Ground rod clamp
- 1 #6 Copper wire solid or stranded to ground rod
- 1 100 Amp Main disconnect required
- 1 2" Nipple (from meter)
- 1 2" socket to breaker box
- 4 2" Lock Rings
- 1 Under-ground Meter socket

## 200 AMP CAPACITY

### Qty. Description

- 1 2/0 THW Copper Conductor to 200 amp disconnect box
- 1 2/8" x 8" copper coated or galvanized ground rod
- 1 Ground rod clamp
- 1 #6 Copper wire solid or stranded to ground rod
- 1 200 Amp Main disconnect required
- 1 2" Nipple (from meter)
- 1 2" socket to breaker box
- 4 2" Lock Rings
- 1 Under-ground Meter socket

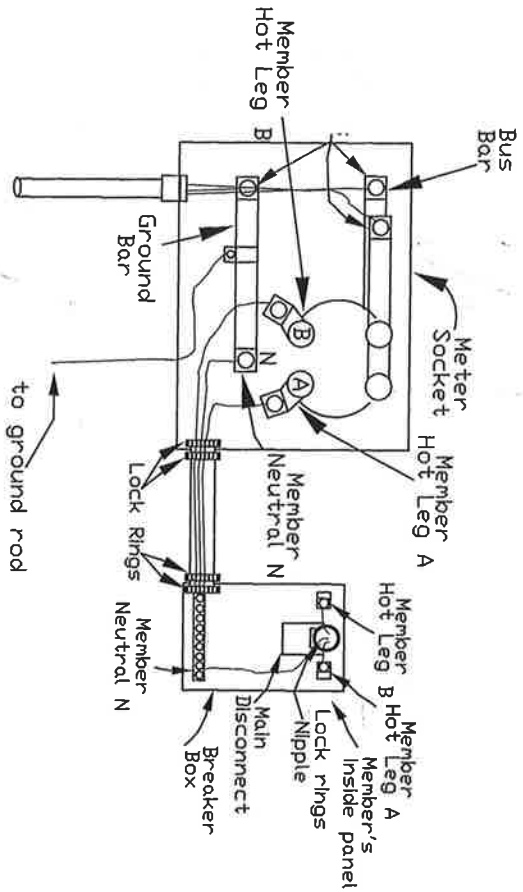


All Wires Leaving Breaker Box

MUST BE IN

Electrical/Gray Conduit

Revised 05/24/2016



All Wires Leaving Breaker Box

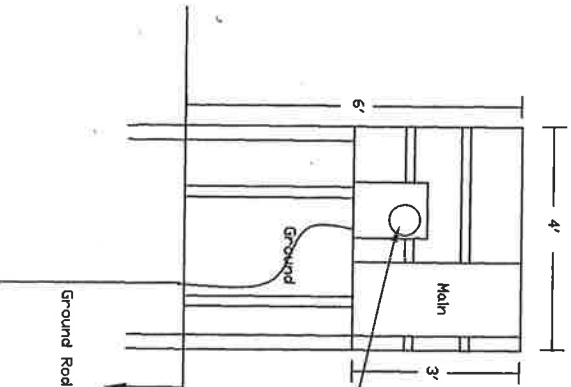
MUST BE IN

Electrical/Gray Conduit

### MATERIAL LIST

- 3 2"X10"X4' TREATED BOARDS
- 2 4"X4"X8' TREATED POST

METER SOCKET MUST BE 4' OFF OF GROUND



POST 2' DEEP